

I. H. 610 (SOUTH LOOP)
east bound access road →

JAMES HAMILTON SURVEY
ABSTRACT NO. 887

Pappadeaux

Pappasito's
Cavender's

PAPPAS SEAFOOD NO. 7
610 SOUTH LOOP
Vol. 343, Pg. 53 H.C.M.R.

PHCC Investments
H.C.C.F. No. L740952

Access Easement to
Lakes at 610 Drive

Christopher J Pappas
H.C.C.F. No. R602593

15' Sanitary Sewer Esmt.
Vol. 343, Pg. 53, H.C.M.R.
10' HL&P Easement
H.C.C.F. No. J113464

City of Houston
15' Sanitary Sewer Esmt.
H.C.C.F. No. H6E924
10' Setback
H.C.C.F. No. H6E924
N 02°41'46" W 5.32'
N 87°18'14" E 170.00'

14 parking spaces
15' Private Storm Easement ("I")
H.C.C.F. No. M016200
0.2217 ACRE
9,657 Sq. Ft.
11 parking spaces

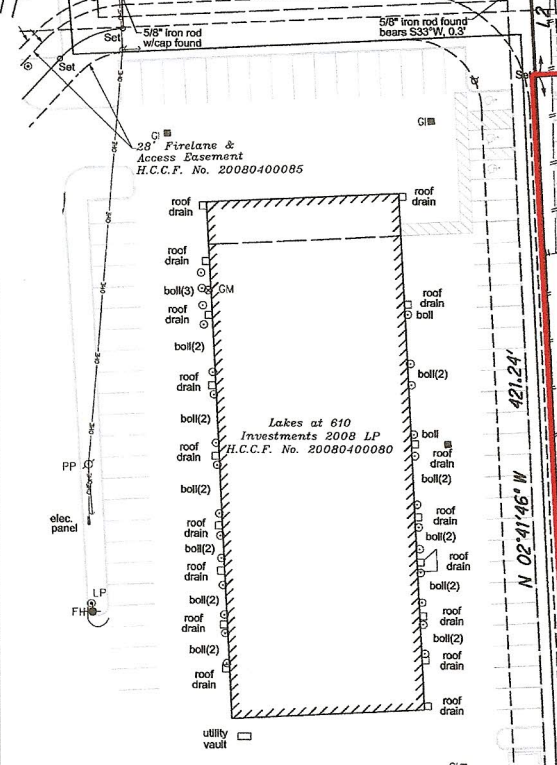
N 87°18'14" E 201.19'

Proposed Access Easement
11 parking spaces
asphalt
17 parking spaces

10' Utility Easement
Vol. 307, Pg. 133, H.C.M.R.

10' HL&P Easement
W/ 5' Aerial Esmt.
H.C.C.F. No. G314442

TRACT II
1.7239 ACRES
75,093 Sq. Ft.



Lakes at 610
Investments 2008 LP
H.C.C.F. No. 20080400080

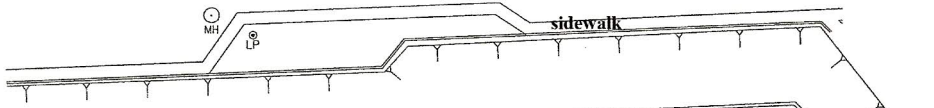
10' Setback
H.C.C.F. No. H616924

10' Setback
H.C.C.F. No. H616924

10' Setback
H.C.C.F. No. H616924

5/8" iron rod found
bears S15°W, 0.4'

S 87°18'14" W 201.19'



Unrestricted Reserve "B"
LAKES AT 610, SECTION ONE
Vol. 307, Pg. 133 H.C.M.R.

Lakes at 610 Drive

S 02°41'46" E 445.51'

S 02°41'46" E 444.68'

S 02°41'46" E 450.00'

N 02°41'46" W 421.24'

N 02°41'46" W 373.24'

S 02°41'46" E 373.24'