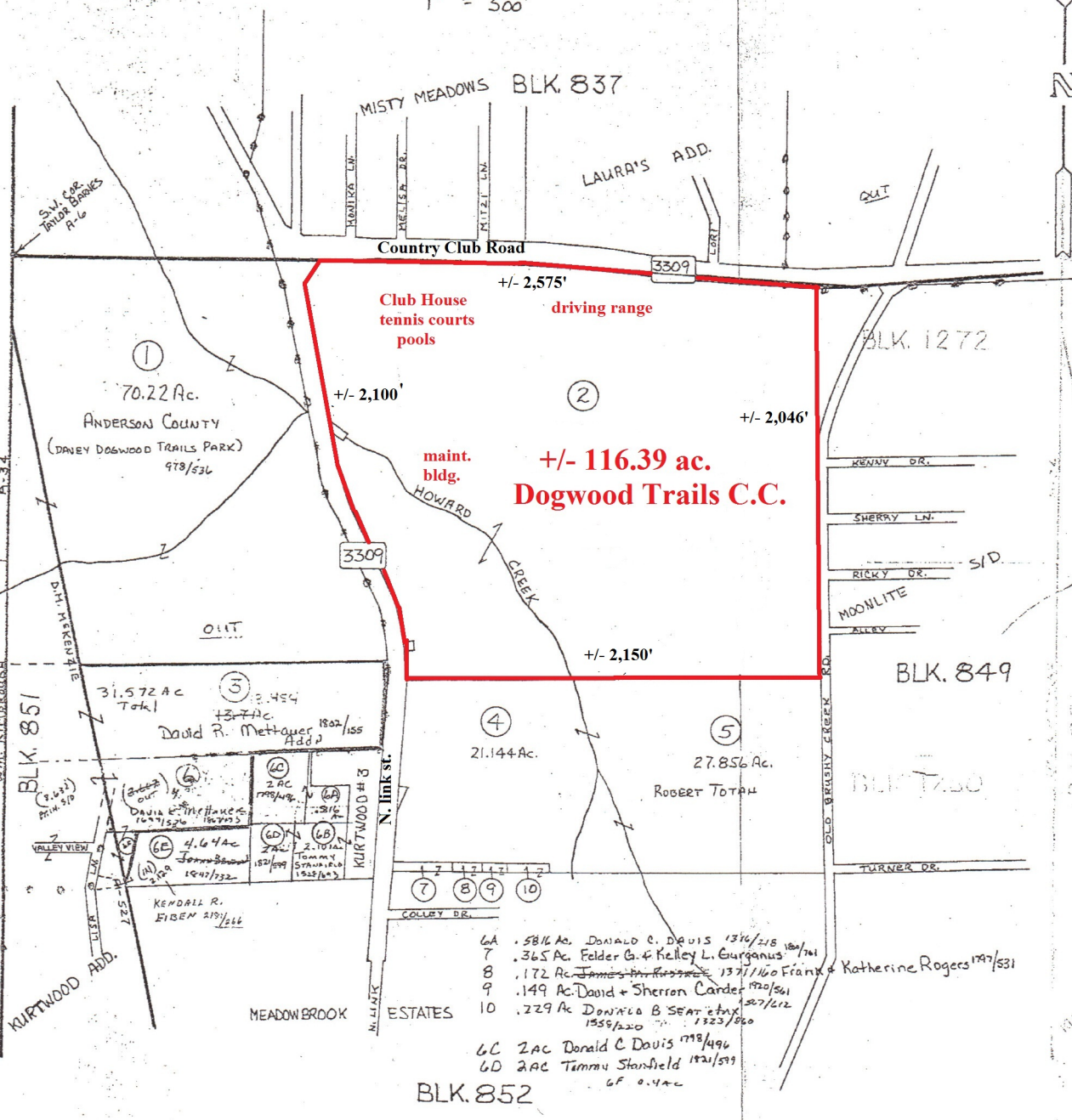


S.G. WELLS
 A-65
 Co. BLK. No. 850
 1" = 500'



- LA .5814 Ac. DONALD C. DAVIS 1314/218
 - 7 .365 Ac. Felder G. & Kelley L. Gurganus 1801/741
 - 8 .172 Ac. James B. Kessinger 1371/160 Frank & Katherine Rogers 1797/531
 - 9 .149 Ac. David & Sherron Carter 1720/561
 - 10 .229 Ac. DONALD B. SEAT 1507/212
- 6C 2 AC Donald C DAVIS 1718/496
 6D 2 AC Tammy Stanfield 1821/519
 CF 0.422

FOR TAX PURPOSES ONLY
 NOT VALID FOR LEGAL USE